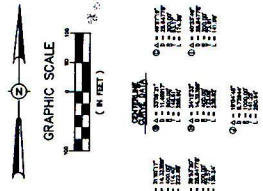
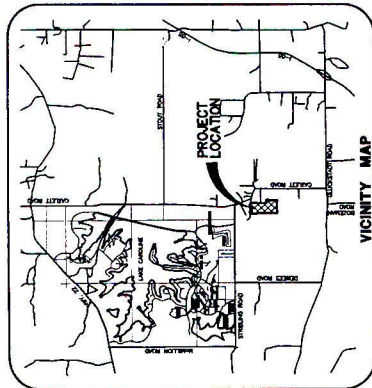


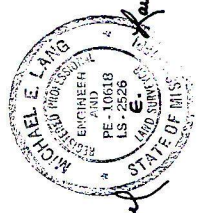
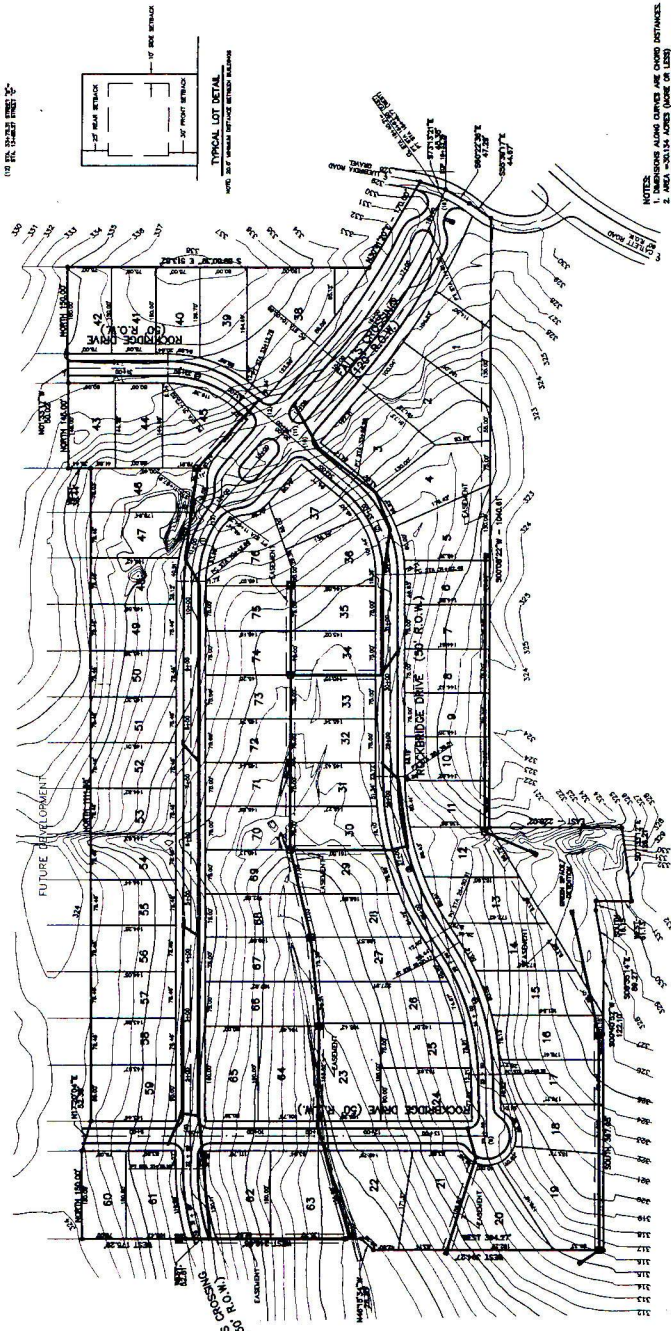
MEMO

To: Madison County Board of Supervisors
From: Brad Sellers
Subject: Revised Preliminary Plat - Falls Crossing, phases 1&2
Date: January 14, 2013

This development was revised to include a lake, and was renamed from Scottsboro to Falls Crossing. The revised preliminary plat meets all requirements of Planning and Zoning.



- UTILITY LEGEND**
- POWER
 - WATER
 - SEWER
 - GAS
 - TELEPHONE
 - FIBER OPTIC
- GENERAL NOTES**
1. ALL DIMENSIONS ARE IN FEET.
 2. ALL DIMENSIONS ARE TO CENTERLINE UNLESS OTHERWISE NOTED.
 3. ALL DIMENSIONS ARE TO CENTERLINE UNLESS OTHERWISE NOTED.
 4. ALL DIMENSIONS ARE TO CENTERLINE UNLESS OTHERWISE NOTED.
 5. ALL DIMENSIONS ARE TO CENTERLINE UNLESS OTHERWISE NOTED.
 6. ALL DIMENSIONS ARE TO CENTERLINE UNLESS OTHERWISE NOTED.
 7. ALL DIMENSIONS ARE TO CENTERLINE UNLESS OTHERWISE NOTED.
 8. ALL DIMENSIONS ARE TO CENTERLINE UNLESS OTHERWISE NOTED.
 9. ALL DIMENSIONS ARE TO CENTERLINE UNLESS OTHERWISE NOTED.
 10. ALL DIMENSIONS ARE TO CENTERLINE UNLESS OTHERWISE NOTED.



DEVELOPER
SR, LLC
P.O. BOX 100
MADISON, MS 39156-0100
601-858-3510

H D LANG AND ASSOCIATES, INC.
POST OFFICE BOX 18085
JACKSON, MISSISSIPPI 39238
601-362-4886

CLIENT
PRELIMINARY LAND DEVELOPMENT PLAN
FALLS CROSSING, PHASE 1 & 2
MADISON COUNTY, MISSISSIPPI

LOCATION
SITING IN THE NORTH 1/4 OF THE NW 1/4 OF SECTION 18
AND THE NORTH 1/4 OF THE NW 1/4 OF SECTION 19
MADISON COUNTY, MISSISSIPPI

REVISION	DATE	BY
1	08-24-10	GRABIN, EY, JGH

DATE: 08-24-10
SCALE: AS SHOWN
BOOK: PAUSE
PROJECT NO.: 05-004